

Netmanias.com: The one and only portal  
dedicated to network and communication in  
Korea

**NETMANIAS**  
Analyze Trends, Technologies and Market

# About Netmanias.com

**Basic information**

**Content**

**Subscribers**

**Team**



# Netmanias.com Basic Information

**NETMANIAS**  
Analyze Trends, Technologies and Market

키워드	5G	4G LTE	C-RAN/Fronthaul	Gigabit Internet	IPTV/UHD	IoT	SDN/NFV	Wi-Fi	Video Streaming	KT	SK Telecom	LG U+	OTT	Network Protocol	CDN	YouTube	Data Center
스폰서 채널	HFR FRONTHAUL	넷비전 MPTCP	스맥 HeNB GW	스프링웨이브 1588 PTP	시에나 데이터센터 상호연결 (DCI)					Korea Communication Review							

## Netmanias.com: The one and only portal dedicated to network and communication in Korea

Netmanias.com, a portal dedicated to network and communication founded in 2002, has been providing a venue for professionals in the industry to obtain and share knowledge on wired/mobile network service/infrastructure, latest trends and key technologies in the network and communication industry for the past 15 years. Netmanias.com's English site launched in 2012.

## Covered Topics: 5G, 4G, X-Haul, Gigabit Internet, IoT, IPTV, SDN/NFV, Korea Operators

As of January 2017, Netmanias.com has more than 47,000 subscribers and 1,100,000 visitors annually.

### Netmanias Korean Site [www.netmanias.com/ko](http://www.netmanias.com/ko)

### Netmanias English Site [www.netmanias.com/en](http://www.netmanias.com/en)

**Publisher/Editor:** Dr. Harrison J. Son  
[son@netmanias.com](mailto:son@netmanias.com)

**Associate Editor:** Dr. Michelle M. Do  
[misun.do@netmanias.com](mailto:misun.do@netmanias.com)

**Advertising Sales and Business Development:** Yunhee Son  
[sonshinepark@netmanias.com](mailto:sonshinepark@netmanias.com)

**Corporate Address:** 201, Hanho Building, 33, Nonhyeon-ro 64-gil, Gangnam-gu, Seoul, 06228, Rep. of KOREA

**Home Page:** [www.netmanias.com](http://www.netmanias.com)

As of January 2017, Netmanias Korean Site ([www.netmanias.com/ko](http://www.netmanias.com/ko)) has more than **31,000 Korean subscribers** and 610,000 Korean visitors annually.

As of January 2017, Netmanias English Site ([www.netmanias.com/en](http://www.netmanias.com/en)) has more than **16,000 global subscribers** and 500,000 global visitors annually.

# Netmanias.com Contents

## Content Topics

### Network and Communication in South Korea - Services and Infrastructure

#### ■ Key topics relating to South Korean big 3 telcos: KT, SK Telecom, LG U+

- World's best broadband/mobile services
- Infomagraphics on wired/wireless subscribers and their behavior patterns
- Innovative network architectures
- What made South Korea the world's best market?
- Strategies for network evolution
- Strategies for service evolution

### Wired/wireless network technologies in the local network

#### ■ Key topics

- Wired/wireless network technologies employed in the local network
- Solutions and equipment from local vendors in the local network

### Analysis of key technologies

#### ■ Key areas

- 5G, 4G
- Backbone/backhaul/fronthaul
- Optical Transport
- SDN/NFV
- IoT
- IPTV/CDN/OTT
- Gigabit Internet

## Content Types

Korean 94 Report

Korean 94 Tec-Doc.

Korean 222 Tech-Blog

Korean 122 Infographics

Korean 597 News

English 34 Reports

English 59 Tech-Doc.

English 166 Tech-Blog

English 96 Infographics

English 319 News

## Content Readers



**Netmanias' Korean Subscriber and Visitors**



**Netmanias' Global Subscriber and Visitors**

# Netmanias.com Contents Example (Korean)

## NETMANIAS REPORTS

<http://www.netmanias.com/ko/?m=board&id=reports>

	<b>세계 각국의 5G 현황 분석 (1) - 5G 표준화 현황</b> Global 5G Status (1) - 5G Standardization Date: 02/20/2017 Tags: 5G	863 2
	<b>우리나라의 IPTV 시장 현황: 2016 Q3</b> Korea Communication Market Data: IPTV 2016 Q3 Date: 12/16/2016 Tags: IPTV, KT, LG U+, SK Telecom, Video Streaming	899 0
	<b>우리나라 이동 3사 LTE 주파수 할당 및 상용화 과정</b> LTE frequency commercialization status in Korea Date: 11/30/2016 Tags: KT, LG U+, LTE, SK Telecom	2,282 0
	<b>우리나라의 초고속 인터넷 시장 현황: 2016 Q3</b> Korea Communication Market Data: INTERNET 2016 Q3 Date: 11/22/2016 Tags: Gigabit Internet, KT, LG U+, SK Telecom	1,147 0
	<b>우리나라 모바일 분야 시장 현황: 2016 Q3</b> Korea Communication Market Data: MOBILE 2016 Q3 Date: 11/19/2016 Tags: KT, LG U+, LTE, SK Telecom	1,754 0
	<b>데이터센터 상호연결 서비스를 위한 고객 가이드   차세대 DCI 구조: Private Optical Network 구..</b> DCI Architecture Evolution: Building Private Optical Network Date: 11/16/2016 Tags: Data Center	1,997 0
	<b>KT 5G 마스터 플랜</b> KT 5G Master Plan Date: 11/10/2016 Tags: 5G, KT	3,103 1
	<b>Korea Communication Review, October 2016</b> Korea Communication Review, October 2016 Date: 09/26/2016 Tags: IoT, KT, SDN/NFV, SK Telecom	3,331 0
	<b>SK Telecom COSMOS White Paper: Evolving Telco Data Center with Software-Defined Tec...</b> SK Telecom COSMOS White Paper: Evolving Telco Data Center with Software-Defined Technologies Date: 08/17/2016 Tags: Data Center, SDN/NFV, SK Telecom	342 0
	<b>Korea Communication Review, August 2016</b> Korea Communication Review, August 2016 Date: 08/08/2016 Tags: 5G, Gigabit Internet, IPTV, IoT, KT, Korea, SDN/NFV, SK Telecom, Wi-Fi	2,477 0

## NETMANIAS TECHNICAL DOCUMENTS

<http://www.netmanias.com/ko/?m=board&id=techdocs>

	<b>LTE 망에서 IP 주소 할당 방법 II: 두 도시 모델</b> IP Address Allocation Schemes II: A Case of Two Cities Tags: IP Allocation, LTE	17,114 9
	<b>LTE 망에서 IP 주소 할당 방법 I: 기본</b> IP Address Allocation Schemes I: Basic Tags: IP Allocation, LTE, PCO	33,112 15
	<b>LTE 과금: Offline</b> LTE Charging: Offline Tags: CDR, Charging, LTE, OFCS, PCRF	19,143 10
	<b>넷플릭스 스트리밍 방식</b> Netflix ABR (Adaptive Bit Rate) Streaming Tags: HTTP Adaptive Streaming, Netflix, OTT, Video Streaming	14,233 2
	<b>LTE Policy and Charging Control (PCC)</b> LTE Policy and Charging Control (PCC) Tags: LTE, PCC, VoLTE	17,817 23
	<b>LTE EMM Procedure: 10/11. Toward Another City</b> LTE EMM Procedure: 10/11. Toward Another City Tags: Attach, Detach, EMM, GUTI, LTE	13,811 2
	<b>LTE EMM Procedure: 8/9. Handover/Cell Reselection with TAU</b> LTE EMM Procedure: 8/9. Handover/Cell Reselection with TAU Tags: Cell Reselection, EMM, Handover, LTE, TAU	15,018 5
	<b>LTE EMM Procedure: 7. Cell Reselection without TAU</b> LTE EMM Procedure: 7. Cell Reselection without TAU Tags: Cell Reselection, EMM, LTE, SIB	17,689 16
	<b>WAN 가속화 기술 분석</b> Analysis on WAN Acceleration Technologies Tags: Acceleration, Data Center, Deduplication, TCP Optimization, WAN	15,705 6
	<b>YouTube 비디오 요청 및 전달 방식 분석 (360p, 720p)</b> YouTube Video Delivery Process (360p, 720p) Tags: Google, HTTP, HTTP Progressive Download, OTT, Video Streaming, YouTube	17,958 22

## NETMANIAS TECH-BLOG

<http://www.netmanias.com/ko/?m=board&id=blog>

	<b>KT 인공지능 TV '기가지니 (GIGA Genie)' 출시 - AI 시장 경쟁 시작</b> KT unveils AI TV 'GIGA Genie', triggering fierce competition in the market Date: 02/02/2017 Author: 도미선 @ Netmanias Tags: 5G, AI, Gigabit Internet, IPTV/UHD, IoT, KT	1,545 0
	<b>차세대 데이터센터 연결 (DCI) 구조: Private Optical Network 구축</b> Ciena's Proposal for DCI Implementation Date: 01/02/2017 Author: 시에나 코리아 Tags: Data Center	573 0
	<b>KT 소용인터넷 전략 - NB-IoT를 중심으로</b> KT's IoT strategy - focused on NB-IoT Date: 01/02/2017 Author: 도미선 @ Netmanias Tags: IoT, KT, NB-IoT	2,612 1
	<b>통신사가 바라보는 5G 네트워크 기술과 산업 방향</b> 5G network technologies and future envisioned by telcos Date: 12/21/2016 Author: 도미선 @ Netmanias Tags: 5G, IoT, KT, SDN/NFV, SK Telecom	3,015 0
	<b>SK 텔레콤 최진성 CTO의 Connected Car와 자율주행차에 대한 견해</b> SK Telecom's CTO Alex Choi's view on 5G Connected Car Date: 12/06/2016 Author: 도미선 @ Netmanias Tags: IoT, SK Telecom	1,698 0
	<b>KT 5G 추진전략: 추진 상황, 시스템/단말, 서비스, 주요 기술</b> KT's 5G Strategy: Standard, System/Device, Services and Technologies Date: 12/02/2016 Author: 도미선 @ Netmanias Tags: 5G, IoT, KT, 5G-SIG	3,901 3
	<b>통신사의 TV 매출액, 인터넷 서비스 매출액에 다가섰다 - KT와 LG U+</b> KT's TV Service Revenue quickly catching up with Internet Service Revenue Date: 11/24/2016 Author: 손장우 @ Netmanias Tags: IPTV, KT, LG U+	2,497 2
	<b>SD-WAN 2.0: 기업 가상 사설망의 새로운 옵션</b> SD-WAN 2.0: Building A Better SD-WAN Date: 11/09/2016 Author: Prayson Pate @ ADVA Optical Networking Tags: Data Center, SDN/NFV	1,591 3
	<b>SK 텔레콤의 첫 LoRa 상용서비스 출시, 그리고 2016 IoT 국제 전시회에서 소개한 IoT 서비스들</b> SK Telecom's IoT services introduced at the 'IoT Korea Exhibition 2016' Date: 11/07/2016 Author: 도미선 @ Netmanias Tags: IoT, LoRa, SK Telecom	3,697 3
	<b>오픈 하드웨어와 소프트웨어로 통신사업자의 유선 액세스망 구축하기</b> Building Software Defined ISP Using Open Hardware and Software Date: 09/28/2016 Author: Reza Toghraee @ ArpaWare Tags: Gigabit Internet, SDN/NFV	2,269 0
	<b>오픈 네트워킹, 화이트 박스 스위치 - 이제는 현실이다.</b> Open Networking, White Box, Bare metal Switches What are the Risks? Date: 09/27/2016 Author: Reza Toghraee @ ArpaWare Tags: Data Center, SDN/NFV	2,049 0
	<b>SK Telecom의 SDRAN (DU 기능 분리 및 서버화) 상용망 검증 - 5G를 위한 큰 걸음</b> SK Telecom and Nokia Implement World's First Cloud-based Radio Access Network in a Commercial LTE Net... Date: 09/25/2016 Author: 손장우 @ Netmanias Tags: 5G, C-RAN/Fronthaul, LTE, SDN/NFV, SK Telecom	5,238 0
	<b>Opinion: 북유럽의 전통 강호들 (에릭슨, 노키아)이 중국의 신룡 거대 세력 (화웨이)의 독주를 막...</b> Can Nordic rivals stop the Chinese juggernaut? Date: 09/14/2016 Author: Rajat Kochhar @ Ericsson Tags: 5G, IoT, LTE	3,616 2

# Netmanias.com: Contents Sample (English)

[SK Telecom' 5G R&D Activities and Ecosystems - 2016 Q3](#)

[Nokia's D-RAN/C-RAN Evolution Architecture](#)

[5G IOT Security](#)

[AT&T's CORD - the ultimate architecture born after decades of innovation in the communications network](#)

[5G Internet of Things](#)

[SDN/NFV-based vCPE Services by AT&T, Verizon and KT](#)

[Who will be the world's first operator to deploy a nationwide IoT network?](#)

[How ready is KT for 5G Olympics?](#)

[Network Architecture Evolution from 4G to 5G](#)

[Brief Survey - Operator's View on 5G C-RAN/Fronthaul Redefinition](#)

[E2E Network Slicing - Key 5G technology : What is it? Why do we need it? How do we implement it?](#)

[KT 5G Network Architecture](#)

[Mobile Network Architecture for 5G Era - New C-RAN Architecture and Distributed 5G Core](#)

[5G network as envisioned by KT - Analysis of KT's 5G network](#)

[5G POC \(Test, Trial\) Status in Korea](#)

[KT's E2E 4G LTE and FTTH Network Architecture](#)

[Netmanias Interview with KT at MWC 2015: KT's demonstrations of LTE-H and LTE-U](#)

[SK Telecom's Network Evolution Strategies \(3\) - RAN Architecture Evolution Strategy](#)

[SK Telecom's Network Evolution Strategies \(2\) - Inter-cell Coordination Evolution Strategy](#)

[SK Telecom's Network Evolution Strategies \(1\): Carrier Aggregation Evolution Strategy](#)

[LTE RAN Architecture: Cell site and LTE BS, B/F-Hauling, Coordination, Comparison and Case Study](#)

[HFR's Mobile Fronthaul Solutions for LTE-A Era](#)

[Netmanias Interview with HFR - Fronthaul Solutions for LTE/LTE-A C-RAN \(Cloud RAN\)](#)

[Evolution of Mobile RAN Architecture in LTE/LTE-A Era \(C-RAN\)](#)

[Fronthaul Size: Calculation of maximum distance between RRH and BBU](#)

09/19/2016

09/13/2016

09/05/2016

08/31/2016

08/30/2016

08/22/2016

04/21/2016

03/13/2016

12/31/2015

12/07/2015

11/27/2015

10/15/2015

10/06/2015

11/03/2015

09/18/2015

09/04/2015

03/30/2015

10/27/2014

10/13/2014

10/07/2014

08/06/2014

08/01/2014

05/27/2014

04/16/2014

04/01/2014


The screenshot displays the Netmanias.com website interface. At the top, there's a navigation bar with links like 'Home', 'Reports', 'Technical Documents', 'TechBlog', 'One-Stop Gallery', 'Korea ICT News', 'Content Site Map', and 'About Us'. A search bar is also present. The main content area features an article titled 'E2E Network Slicing - Key 5G technology : What is it? Why do we need it? How do we implement it?' dated November 27, 2015, by Dr. Harrison I. Son and Chris Yoo. The article includes a download PDF file button, a comments section, and a list of related contents on the right side. The related contents list includes articles such as 'SK Telecom' 5G R&D Activities and Ecosystems - 2016 Q3', 'Open Networking, White Box, Bare metal switches What are the risks?', 'Nokia's D-RAN/C-RAN Evolution Architecture', 'New Open Source CORD Project Offers First Open Reference Implementation for Service Provider's Central Office/Access', '5G IOT Security', 'AT&T's CORD - the ultimate architecture born after decades of innovation in the communications network', '5G Internet of Things', 'SDN and NFV Drive Change, But Not Everywhere', 'SDN/NFV-based vCPE Services by AT&T, Verizon and KT', and 'KT's nationwide LTE-M network and IoT strategy'. At the bottom, there's a section for 'KOREA ICT RESEARCH REPORT' titled 'SK Telecom's Massive IoT Deployment through LoRa for Small Things'.



# Netmanias.com Korean Subscribers • Email Newsletter

**NETMANIAS**  
Analyze Trends, Technologies and Market

## Telecom Operators

**1,277** subscribers@kt.com 

**841** subscribers@sk.com 

**507** subscribers@lguplus.co.kr 

...

10+ companies

## SI / Integrator

230@Samsung.com (SDS)  
111@Sicc.co.kr  
86@Lgcns.com  
78@Lgntel.com  
60@Snetsystems.co.kr  
39@Teletron.co.kr  
33@Lgcns.com  
27@Hanwha.com  
26@Opasnet.co.kr  
23@Ringnet.co.kr  
20@Lginnotek.com  
19@Networkons.com  
16@Globaltelecom.co.kr  
16@Pndinc.co.kr  
...

50+ companies

## Local Vendors

**2,374**@Samsung.com (SEC)

**710**@Lge.com

112@Comtec.co.kr  
67@Pantech.com  
59@hfrnet.com  
59@Dasannetworks.com  
54@lgericsson.com  
48@Solid.co.kr  
48@ubiquoss.com  
38@Innowireless.com  
61@Innowireless.co.kr  
53@eluon.com  
50@Contela.com  
46@Ntels.com  
38@humaxdigital.com  
36@Uangel.com ...

200+ companies

## Korean Office of Global Vendors

54@nokia.com (한국인)  
46@cisco.com (한국인)  
33@Huawei.com (한국인)  
18@Anritsu.com (한국인)  
16@Hpe.com (한국인)  
14@Lghitachi.co.kr  
12@Juniper.net (한국인)  
...

50+ companies

## Research/Organization

**406**@etri.re.kr

...

20+

## Professor/Students:

177@kaist.ac.kr  
155@yonsei.ac.kr  
96@Snu.ac.kr  
202@korea.ac.kr  
...

60+

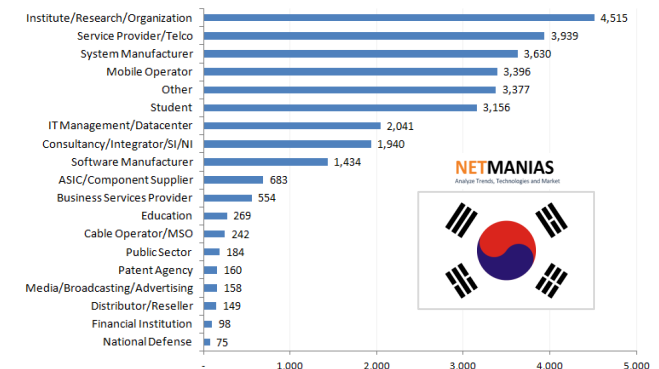
## IDC Service Providers: 50+

23@Skcc.com | 19@Cdnetworks.com/cO.kr | 19@poscoict.com | 15@navercorp.com  
| 4@Sejongtelecom.net | 14@hyundai-autoever.com | 13@Kinx.net | 10@Tbroad.com ...

**Highly focused on  
network and  
communication industry**

## Netmanias Korean Subscribers

**31,000+**



# Netmanias.com Global Subscribers

• Email Newsletter

**NETMANIAS**  
 Analyze Trends, Technologies and Market

## Telecom Operators (5,000+)

(회원 10인 이상)

통신사	회원수		
3UK	17	MCI	15
Aircel	10	Mobifone	26
Asia Pacific Telecom	20	Mobily	10
AT&T	57	Mobinnet	12
Axiata	18	MTN	26
Bell Canada	18	MTS	10
Bharti Airtel	30	Nextel	11
BT	20	Ooredoo	25
Cablevision	10	Orange	111
China Mobile	32	Packet-1	10
China Telecom	26	Reliance	245
CHT	68	SFR	15
Claro	12	Singtel	12
Deutsche Telekom	32	Smart	12
DTAC	12	Smartfren	23
DU	12	SoftBank	26
EE	14	Sprint	21
Entel	11	STC	39
Etisalat	16	Swisscom	10
Far EasTone	10	Taiwan Mobile	20
Globe Telecom	10	Tata Teleservices	15
Hutchison	14	Tatacommunications	20
Idea Cellular	18	Tele2	10
Internux	10	Telecom Italia	23
KDDI	21	Telefonica	51
M1	10	Telenor	33
Maxis	17	Telia Company	10
		Teliasonera	10
		Telkom Indonesia	25
		Telstra	15
		Telus	11
		Tigo	11
		TIM Brasil	11
		Tiscali	10
		T-Mobile	23
		True	10
		Turk Telecomm	24
		Turkcell	20
		U Mobile	10
		Verizon	71
		Viettel	51
		VNL	12
		VNPT	18
		Vodafone	108
		Yemen Mobile	10
		YTL	15
		Zain	20

## Integrator, SI/NI, Consulting

(회원 20인 이상)

인테그레이터, SI, 컨설팅	회원수
Accenture	20
Aricent	140
GlobalEdge	62
HCL	83
Inttechservices	81
Mitel	35
Netas	26
Sasken	35
Techmahindra	117
WIPRO	81

## Global Enterprises

(회원 20인 이상)

다국적 기업	회원수
advaoptical.com	23
alcatel-lucent.com	138
broadcom.com	26
ciena.com	44
cisco.com	239
commscope.com	23
coriant.com	25
ericsson.com	807
exfo.com	39
HP/HPE	86
huawei.com	564
intel.com	102
motorolasolutions.com	27
nokia.com	587
oracle.com	35
parallelwireless.com	31
qti.qualcomm.com	51
radisys.com	36
rohde-schwarz.com	23
viavisolutions.com	38
ZTE	87

Highly focused on network and  
communication industry

Netmanias Global Subscribers

16,000+


**NETMANIAS**  
 Analyze Trends, Technologies and Market

# Netmanias.com Our Team

**NETMANIAS**  
Analyze Trends, Technologies and Market

Key Words	5G	4G LTE	C-RAN/Fronthaul	Gigabit Internet	IPTV/Video Streaming	IoT	SDN/NFV	Wi-Fi	KT	SK Telecom	LG U+	Network Protocol	Samsung
CHANNELS	HFR <sub>FRONTHAUL</sub>	Netvision <sub>MPTCP</sub>	SMEC <sub>HeNB GW</sub>	Springwave <sub>1588 PTP</sub>	Korea Communication Review								

All with more than 15 years of experience in the fields

## Four editors



Harrison J. Son



Chris Yoo



Michelle M. Do



Tomas Shin

### Select topics and create content

- All with 15+ years of experience in network consulting for local and global clients
- 30+ contributors

### Internally, we:

- Analyze the latest global and local trends and technologies
- Discover key content topics

### Externally, we:

- Communicate with global and local vendors on a regular basis
- Attend global and local conferences and exhibits and interview key figures

## Site development and operation



Leon Choi



Soojung Lee

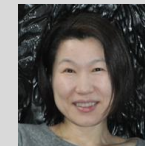
### Platform development

Dedicated to development and operation of Netmanias.com for the past 12 years

### Platforms developed

- Content management system
- Subscriber management system
- Target marketing system: Analyze Subscriber behavior patterns through interworking of the above two systems

## Content globalization



Yoonhee Son

### One in-house linguist for content globalization

- Dedicated linguist in Seattle, WA, USA
- With + 15 years of experience in IT globalization and localization (Google, Microsoft, Tableau, etc.)
- Translating all content posted on Netmanias.com for the past five years



# Netmanias.com Global Contributors

**NETMANIAS**  
Analyze Trends, Technologies and Market

Key Words	5G	4G LTE	C-RAN/Fronthaul	Gigabit Internet	IPTV/Video Streaming	IoT	SDN/NFV	Wi-Fi	KT	SK Telecom	LG U+	Network Protocol	Samsung
CHANNELS	HFRFRONTAUL		NetvisionMPTCP	SMECHeNB GW	Springwave1588 PTP					Korea Communication Review			

## List of Global Contributors [View Online](#)



**Thierry Van de Velde**  
Consulting Technology Specialist  
at Nokia, IP & Optical Networking



**Prayson Pate**  
Chief Technology Officer for  
Ensemble  
at ADVA Optical Networking



**Barkan Ersoy**  
Senior Traffic & Performance  
Modelling Engineer  
at Vodafone UK



**Ejaz - Muhammad Sial**  
Technology Strategist  
at T-Mobile



**Houman Sadeghi Kaji**  
Chief Innovation Officer  
(CIO) at Lotus Communication Inc.



**Claus Hetting**  
CEO & Chairman  
at Wi-Fi NOW



**Mohammad AbuSalah**  
Senior Telecoms Consultant  
at IDC



**Zeeshan Rizvi**  
Cloud / DevOps / SDN Strategy  
at Cisco Systems Inc



**Rajat Kochhar**  
Wireless and Wireline Networks  
Consultant at Ericsson



**Reza Toghræe**  
Technical Manager (CCIE, Cloud,  
SDN, Network, Security Expert)  
at ArpaWare



**Carlos Lopez- Lopez**  
Senior Product Manager  
at AT&T Mobility



**Avi Dorfman**  
VP R&D  
at Telco Systems



**Zied TURKI**  
Consultant at NetXP



**Nakul Nagralawala**  
Business Development Executive at  
Alten Calsoft Labs



**Mojtaba HOUSHMAND**  
IT OSS & Backend Services  
Manager at MobinNet Telecom



**Mahmoud Ali**  
LTE Team Leader/SME  
at AdvComm



**Anand R. Prasad**  
Chairman of 3GPP security  
working group (SA3) and Chief  
Advanced Technologist at NEC



**Dean Bubley**  
Founder and Director  
at Disruptive Analysis



**Ari Chakrabarti**  
Technical Account Management  
at Financial Institution Consulting



**Mohamed Abdel Monem**  
Radio Optimization Senior Engineer  
at Vodafone Egypt



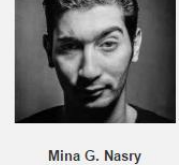
**Leonardo Zanoni Pedrini**  
Telecom Consultant  
at Telefônica Brasil (TelefônicaVivo)



**Andreas Hipp**  
Member of the Board  
at Cirrus Core Networks



**Kuldeep Kaushik**  
Management & Technology  
Consultant at Ericsson



**Mina G. Nasry**  
Network Engineer, Core Team  
at NOOR Data Network