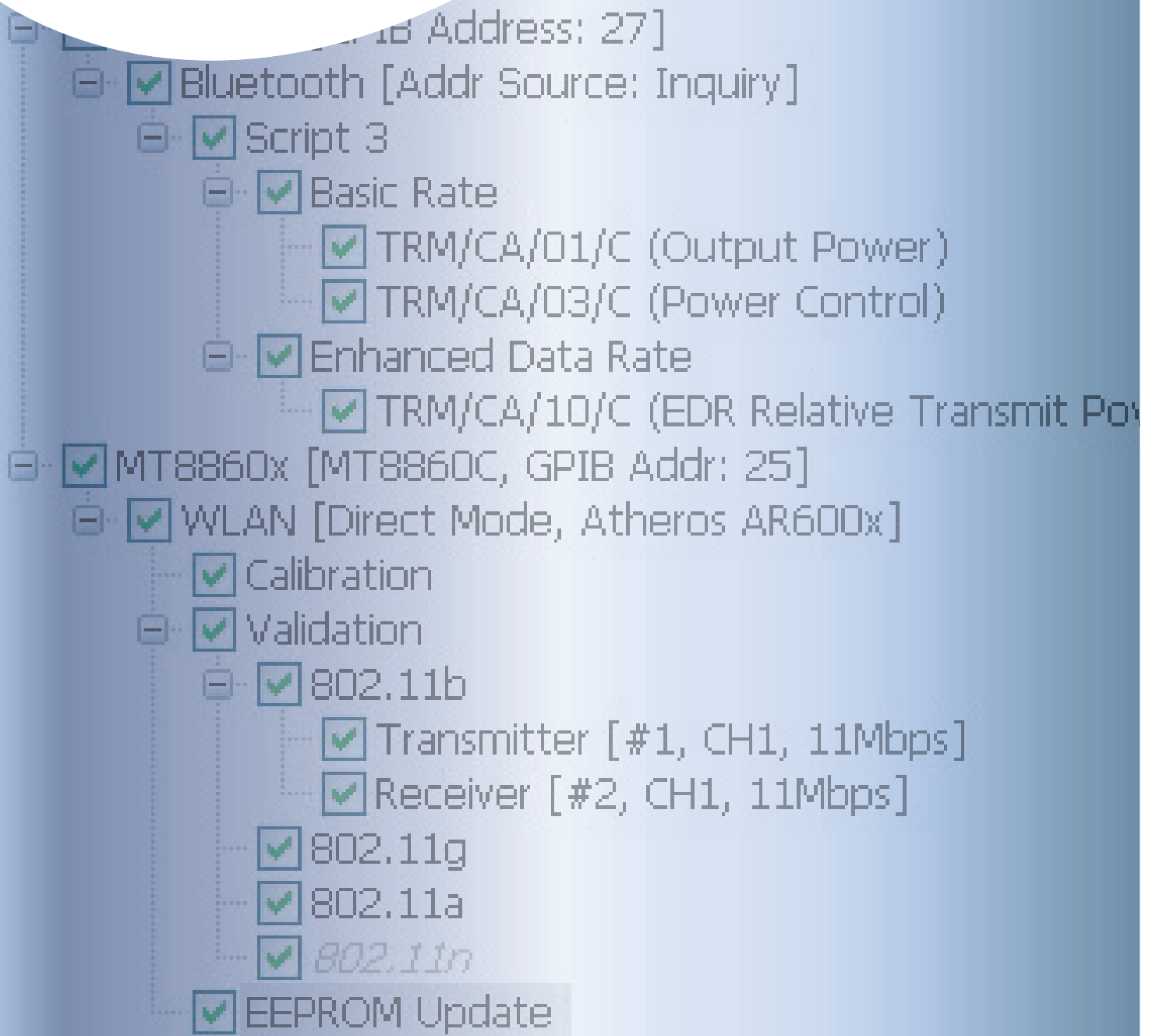


CombiTest

Multi-standard wireless test plan application

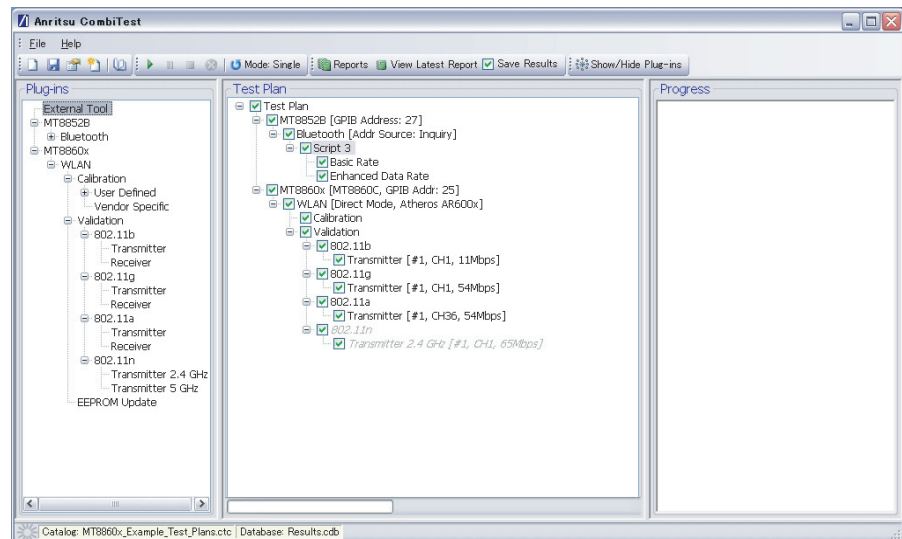


Introducing CombiTest

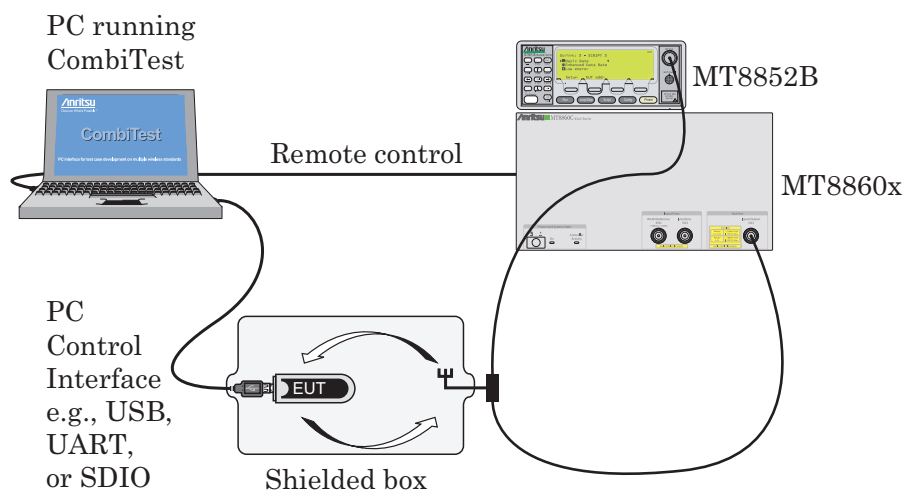
CombiTest is a software application used to remotely control Anritsu WLAN and *Bluetooth* test sets using a user-configured test plan of measurements. It is ideal for creating design-verification or production test plans for the new generation of wireless combo modules including 802.11 and *Bluetooth* radios. CombiTest allows users to install plug-ins as required for each test instrument.

CombiTest features:-

- Plug-ins for the Anritsu MT8860x WLAN Test Set and the Anritsu MT8852B *Bluetooth* Test Set
- WLAN Network and Direct modes supported
- *Bluetooth* test mode measurements
- Rapid creation and execution of test plans
- Control packages available for leading WLAN chipsets
- Calibration, validation, and EEPROM programming of modules
- Run an entire test plan or just the selected components
- Detailed report of test results with database of previous tests
- CombiTest application source code available on request

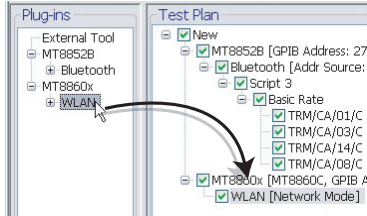


Setup



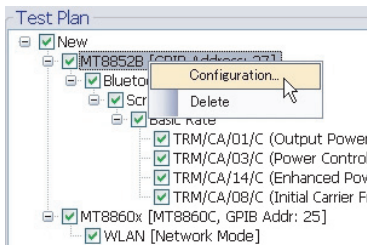
Five Simple Steps

CombiTest is simple to use. Just follow the five steps below to build a test plan and view the test results.



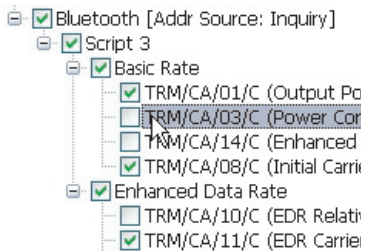
1. Build

Build a test plan in seconds by selecting the required components from the instrument plug-ins. Measurement and calibration tasks are selected in the [Plug-in] pane and transferred to the Test Plan by double-clicking or by drag-and-drop.



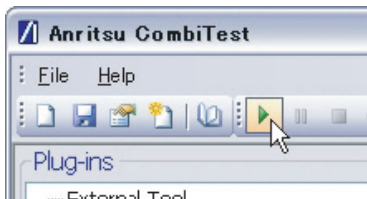
2. Configure

When all required components are in place, configure the remote connection, the wireless settings, and the measurements to be run. Each group of settings opens in a dialog box that is accessible from the associated branch of the test plan.



3. Select

Test plans can be executed in whole or in part by selecting the required components. Tasks that are not required can be removed by clearing the check mark (✓) from the box. This is particularly useful when re-running or analyzing particular measurements.



4. Run

The test plan can be run once, in a continuous loop, or over a specified number of cycles.



5. View

When the test plan is complete, detailed measurement results are presented in a test report. Previous reports can be accessed from a database that can be filtered based on overall result and/or date of execution.

ANRITSU CORPORATION

5-1-1 Onna, Atsugi-shi, Kanagawa, 243-8555 Japan
 Phone: +81-46-223-1111
 Fax: +81-46-296-1264

- Australia

ANRITSU PTY LTD.
 Unit 3/170 Forster Road Mt. Waverley,
 Victoria, 3149, Australia
 Phone: +61-3-9558-8177
 Fax: +61-3-9558-8255

- Brazil

ANRITSU ELETRÔNICA LTDA
 Praca Amadeu Amaral, 27-1 andar
 01327-010 - Paraisópolis, Sao Paulo, Brazil
 Phone: +55-11-3283-2511
 Fax: +55-11-3886940

- Canada

ANRITSU ELECTRONICS LTD.
 700 Silver Seven Road, Suite 120, Kanata,
 ON K2V 1C3, Canada
 Phone: +1-613-591-2003
 Fax: +1-613-591-1006

- Denmark

ANRITSU A/S
 Kirkebjerg Allé 90 DK-2605 Brøndby, Denmark
 Phone: +45-721
 Fax: +45-72112210

- Finland

ANRITSU AB
 Teknobulevardi 3-5, FI-01530 Vantaa, Finland
 Phone: +358-9-4355-220
 Fax: +358-9-4355-2250

- France

ANRITSU S.A.
 9, Avenue du Québec Z.A. de Courtaboeuf 91951 Les
 Ulis Cedex, France
 Phone: +33-1-60-92-15-50
 Fax: +33-1-64-46-10-65

- Germany

ANRITSU GmbH
 Nemetschek Haus Konrad-Zuse-Platz 1 81829
 München, Germany
 Phone: +49 (0) 89 442308-0
 Fax: +49 (0) 89 442308-55

- Hong Kong

ANRITSU LIMITED LTD.
 Units 4 & 5, 28th Floor, Greenfield Tower, Concordia Plaza,
 No. 1 Science Museum Road, Tsim Sha Tsui East,
 Kowloon, Hong Kong
 Phone: +852-2301-4980
 Fax: +852-2301-3545

- India

ANRITSU CORPORATION India Liaison Office
 Unit No.S-3, Second Floor, Esteem Red Cross Bhavan,
 No.26, Race Course Road, Bangalore 560 001 India
 Phone: +91-80-30944707

- Italy

ANRITSU S.p.A.
 Via Elio Vittorini, 129, 00144 Roma EUR, Italy
 Phone: +39-06-509-9711
 Fax: +39-06-502-2425

- Korea

ANRITSU CORPORATION
 8F Hyun Juk Bldg. 832-41, Yeoksam-dong,
 Kangnam-ku, Seoul, 135-080, Korea
 Phone: +82-2-553-6603
 Fax: +82-2-553-6604

- P. R. China

ANRITSU COMPANY LTD.
 Beijing Representative Office
 Room 1515, Beijing Fortune Building, No. 5 North Road,
 the East 3rd Ring Road, Chao-Yang District
 Beijing 100004, P.R. China
 Phone: +86-10-6590-9230

- Singapore

ANRITSU PTE LTD.
 10, Hoe Chiang Road #07-01/02, Keppel Towers,
 Singapore 089315
 Phone: +65-6282-2400
 Fax: +65-6282-2533

- Sweden

ANRITSU AB
 Borgafjordsgatan 13 164 40 Kista, Sweden
 Phone: +46-853470700
 Fax: +46-853470730

- Taiwan

ANRITSU COMPANY INC.
 7F, No. 316, Sec. 1, NeiHu Rd., Taipei, Taiwan
 Phone: +886-2-8751-1816
 Fax: +886-2-8751-1817

- U.K.

ANRITSU LTD.
 200 Capability Green, Luton, Bedfordshire LU1 3LU, U.K.
 Phone: +44-1582-433280
 Fax: +44-1582-731303

- U.S.A.

ANRITSU COMPANY
 1155 East Collins Boulevard,
 Richardson, Texas 75081
 Toll Free: 1-800-ANRITSU (267-4878)
 Phone: +1-972-644-1777
 Fax: +1-972-644-3416

Ordering information:

Part number	Item
MX880000A	CombiTest application
MX880001A	MT8860x plug-in
MX880002A	MT8852B plug-in
MX880003A	External tools plug-in
MX880004A	Auxiliary control plug-in

Control packages available for Atheros, Broadcom, CSR, Marvell, Ralink, and TI devices.
 Contact wlan.support@anritsu.com for up to date details of supported devices.

The *Bluetooth* word mark and logos are owned by the *Bluetooth* SIG, Inc. and any use of such marks by Anritsu is under license. Other trademarks and trade names are those of their respective owners.

Data subject to change without notice. For the most recent specification visit: www.anritsu.com