

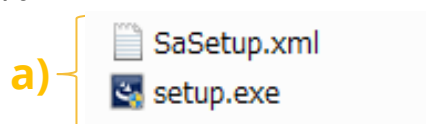
# Firmware Install

## Simple Operation Guide

Signal Analyzer MS2830A / MS2840A / MS2850A

This guide explains the simple procedure for installing firmware in the Signal Analyzer MS2830A, MS2840A and MS2850A.

- Copy the firmware files (a below) to a folder (b below) on a USB memory stick.



b) x:\¥Anritsu Corporation¥Signal Analyzer¥Install (x: USB drive letter)

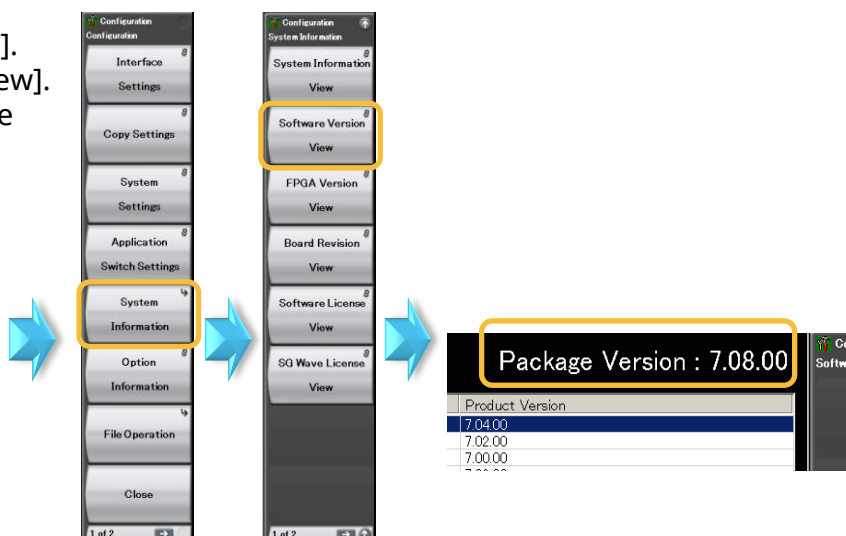
- Insert the above-described USB memory stick into the Signal Analyzer MS2830A, MS2840A or MS2850A and install the firmware using the procedure described on the following page.

### (Supplementary Explanation) Method for confirming installed firmware version

[Procedure]

- ① Press [System Config].
- ② Press [F5: System Information].
- ③ Press [F2: Software Version View].
- ④ Check "Package Version" at the screen top right

①



①



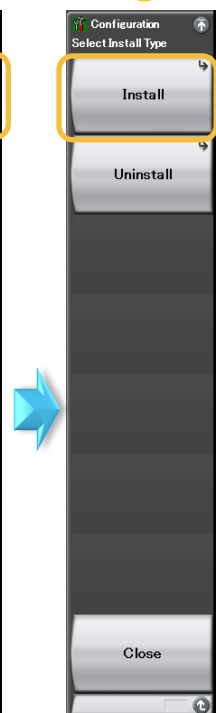
[Procedure]

- ① Press [System Config].
- ② Press [→]\* to go to Page 1 (\*: button below F8).
- ③ Press [F1: Software Install].
- ④ Press [F1: Install].
- ⑤ Press [F1: Software].
- ⑥ Select (E)\* and press [F7: Set] (\*: select USB drive letter).
- ⑦ Press [F1: Install].
- ⑧ Select [Yes] and press [Enter]\* (\*: button under rotary knob).
- ⑨ Firmware installation starts and the unit restarts automatically.

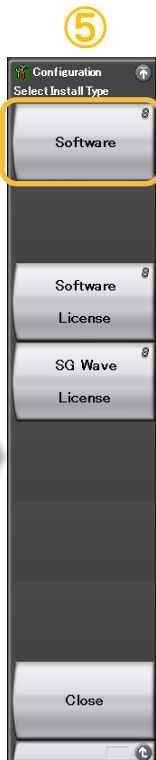
②



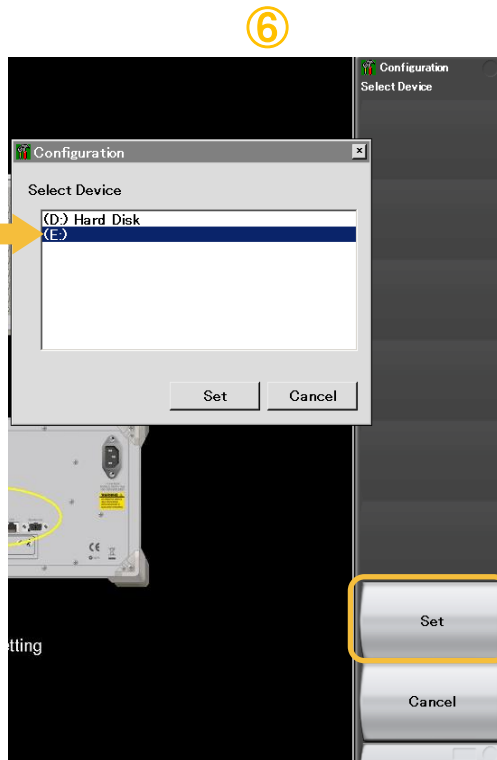
③



④

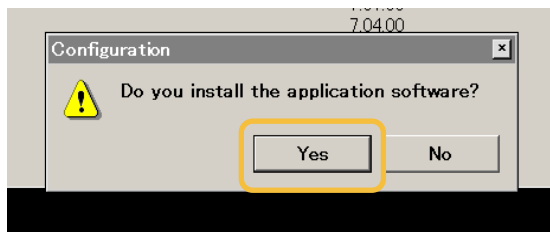


⑤

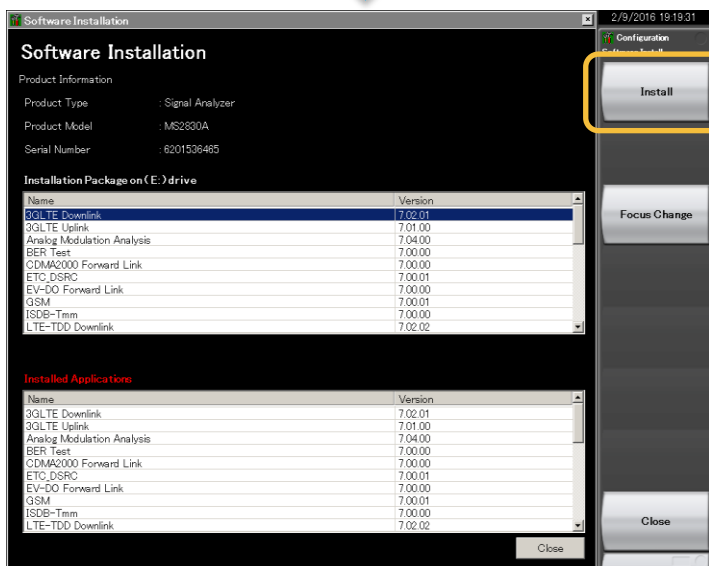


⑥

⑧



⑦



⑨

